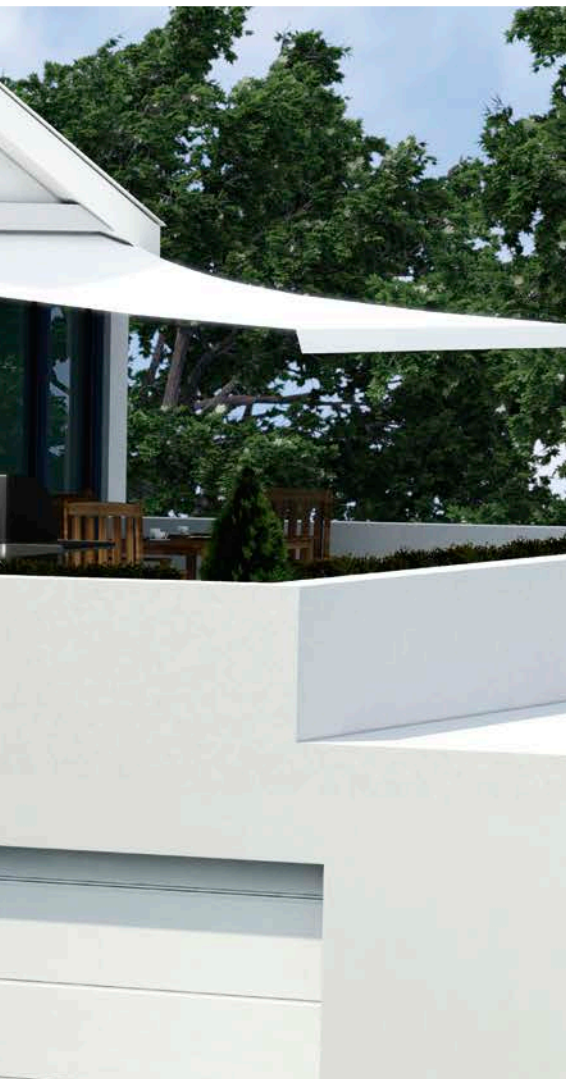




Garage door operators

Intelligent operators with well-designed accessories for maximum convenience





WE DELIVER THE QUALITY – YOU ENJOY THE CONVENIENCE!

With reliable door operators from SOMMER, you can be assured of durability for years to come. This is thanks to both their high quality and easy operation, and the meticulous craftsmanship and certifications¹⁾, allowing you to find the right operator for the door you want.

Our door operators are tested by TÜV/GS and monitored at regular intervals by TÜV. They also comply with the latest European regulations on "Electrical Safety" and "Electromagnetic Compatibility". (CE marking)

MADE IN GERMANY



3

YOUR SAFETY IS WHAT DRIVES US

Safety and accident prevention are SOMMER's highest priorities. Our operators are equipped with dependable and proven technology that you can rely on.

The **automatic obstacle detection** ensures optimal protection. The operator reverses (reversion) if an obstacle is

encountered; this ensures that people, animals and vehicles will not be pinched or jammed.

The unique **emergency-unlock system** allows the door to be engaged and disengaged in every position. This permits easy manual opening and locking. In addition, and only available

from SOMMER, your garage door also remains locked in any position in the event of a power failure.

The **self-inhibiting motor** offers effective protection against break-in or unauthorised access.

¹⁾ An overview of all certified gate operator combinations can be found at: som4.me/cgdo

BOTH BRAWN AND BRAINS

What makes our operators so powerful is the ingenious technology. Our motors are not statically fixed to one point; they travel along a stationary, tensioned chain. This ensures optimal application of force with maximum safety at all times.

This gentle transmission technology ensures a long service life and much less wear and tear on the garage door operator. The operator is also completely maintenance-free. As the chain does not have to be oiled, it won't leave messy oil spots in your garage or on your car.

Intelligent control technology

The system continuously reads in the required force and adapts it to the external conditions, thus providing the highest level of safety against jamming or pinching.

4 This continuous adaptation of the door running values means that the operator learns to adjust itself optimally to your door. This is how our operator becomes your operator.

Certified quality

Our garage door operators are tested and certified according to the strictest guidelines. You can be assured that our products are of the highest "Made in Germany" quality.

A reference list with over 3000 door/operator combinations with SOMMER garage door operators and doors from well-known manufacturers can be found here: som4.me/cgdo



The restriction of closing forces is certified to EN 12453 via electronic motor monitoring. Tested by ift Rosenheim.

Meaning of the icons



Bidirectional radio system enables active communication between transmitter and receiver.



Maximum protection against hackers thanks to 128-bit AES encryption with rolling code.



Disturbance-resistant radio signal guarantees a large range and reliability.



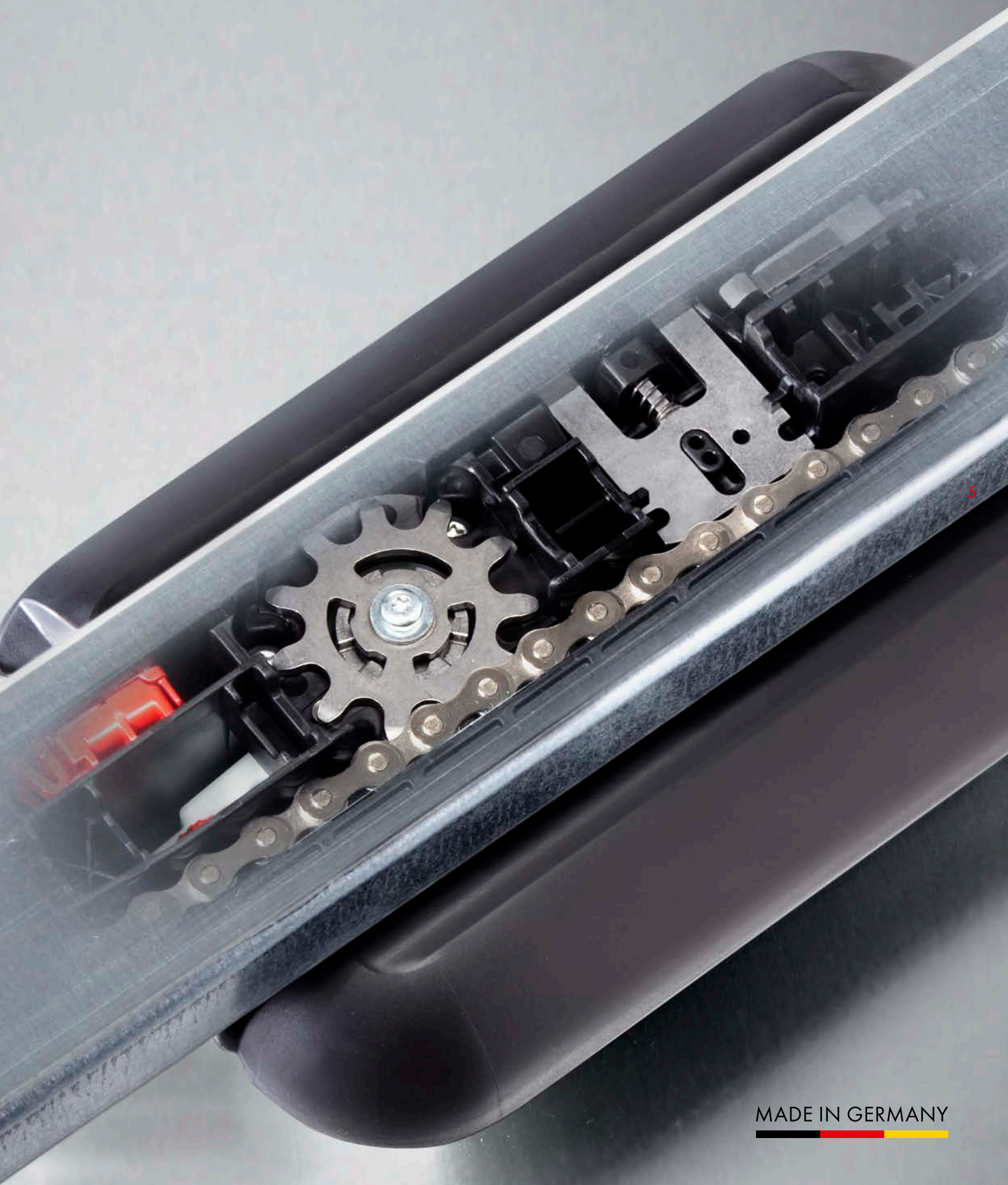
Connection for battery pack possible. Supplies energy to the operator for up to 12 hours in the event of a power failure.



Energy-efficient consumption on standby.



Durable, energy-saving and efficient lighting thanks to state-of-the-art LED technology.



THIS IS WHAT OUR OPERATORS CAN OFFER YOU



Safety thanks to encrypted radio control system

The garage door operator with bidirectional and encrypted radio control system provides maximum security.

Backward compatibility of the transmitter to the Somloq Rollingcode radio control system is always available.



Numerous expansions

Including the Memo memory space expansion, Senso humidity sensor and numerous other accessory modules. As the connections are positioned directly on the motor carriage, no spiral cables are required. This helps you to save time and money thanks to significantly reduced work being required.



Emergency power supply in the event of a power failure

During a power failure, the operator can be run in emergency mode with our optional battery pack, meaning that your door will never fail.

6



Brightness thanks to travelling lighting

The LED lighting integrated into the motor carriage is equipped with six individual LEDs – for optimal brightness in the garage.



Smooth-running and long-lasting

Thanks to the gear-saving technology, the garage door operator is extremely quiet, low-wear and has a very long lifetime. The operator is completely maintenance-free.



Optimal application of force

Our stationary chain with travelling motor has several key advantages. The additional load from the required chain tension of a continuous chain or toothed belt is avoided thanks to this motor concept, and wear is drastically reduced, whilst the service life is extended and repair costs lowered.



Restriction of closing forces

The system monitors the closing forces according to EN 12453 via electronic motor monitoring. This control mechanism provides maximum safety.



Emergency release

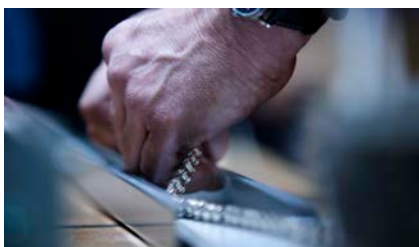
Thanks to the integrated SOMMER emergency release system, the motor carriage can be engaged and disengaged in any position. This ensures safety in any position, even if there is a power failure.



Environmental and cost efficiency

The energy-saving operator has power consumption of below one Watt in standby mode, ensuring low annual electricity costs. It is thereby not only inexpensive to operate, but also environmentally-friendly.

7



Clean chain

The chain is maintenance-free and does not need to be oiled. This prevents oil spots from getting on the door or vehicle.



Universal use – compatible with almost all door types

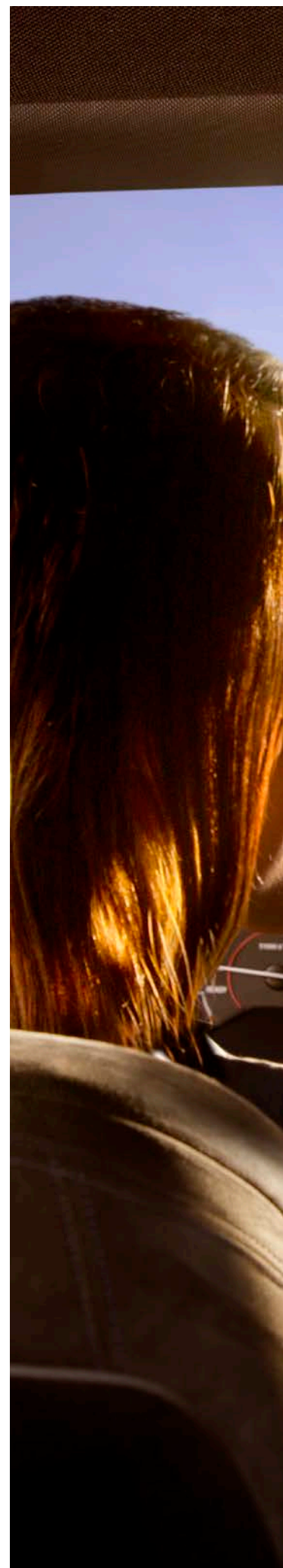
Our operators are suitable for sectional doors, overhead doors, up-and-over doors, one piece doors, hinged double doors, side-opening sectional doors, side-opening doors and sliding gates in buildings. You can achieve optimised door parameters with the easy DIP switch function directly on the operator.

GARAGE DOOR OPERATORS:
**YOUR INTELLIGENT
OPERATOR SYSTEM**
FOR MAXIMUM
RELIABILITY

8

**[FASTER. MORE SECURE. MORE INTELLIGENT.
BRIGHTER – SOMMER GARAGE DOOR OPERATORS.]**

Here comes the future of garage door operators. SOMMER pro⁺ and base⁺ operators are the innovative successors of the successful SOMMER operator concept. The intelligent motor carriage offers plenty of room to connect well-designed accessories. The separate control unit housing of the pro⁺ offers even greater flexibility and convenience.







10

SOMMER base⁺

Universal operator for sectional doors, overhead doors, one piece doors, up-and-over doors¹⁾ and side-opening sectional doors



11

The SOMMER base⁺ features our most advanced garage door control unit with various optimised speed profiles and the option for precision setting of the operating forces. The system continuously learns automatically and adjusts the door operation accordingly.

Top quality

- The low-wear, robust and standard-compliant technology with its powerful, travelling motor ensures reliable operation and functionality for many years, with extremely low energy consumption.
- This gentle transmission technology ensures a long service life and less wear and tear of the garage door operator. The operator is completely maintenance-free.
- Intelligent, responsive control technology increases the service life of your door.
- **Unique obstacle detection:** Damage is avoided, e.g. due to freezing conditions.
- **Secure door closing:** Uneven ground conditions are compensated for thanks to the optimum closing pressure. Pests and leaves are kept outside.

Maximum safety

- **Optimised for break-in protection:** The operator detects attempted break-ins and generates active counter-pressure through motor with high self-locking.
- **Partial opening:** To move the door to a ventilation position via a radio command, or automatically as an option via the Senso humidity sensor.
- Power-saving LED lighting in travelling motor carriage for better lighting of the garage and any potential hazard areas.
- Integrated emergency release for manual interior operation of the door in the event of a power failure.

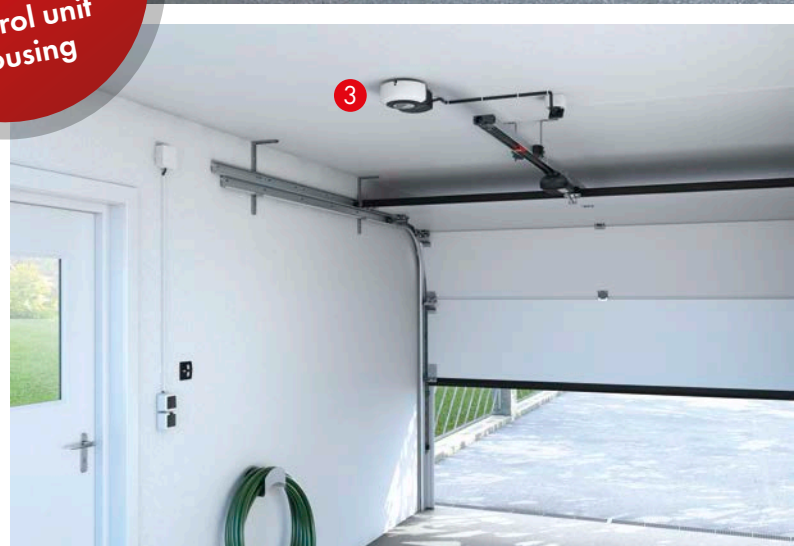
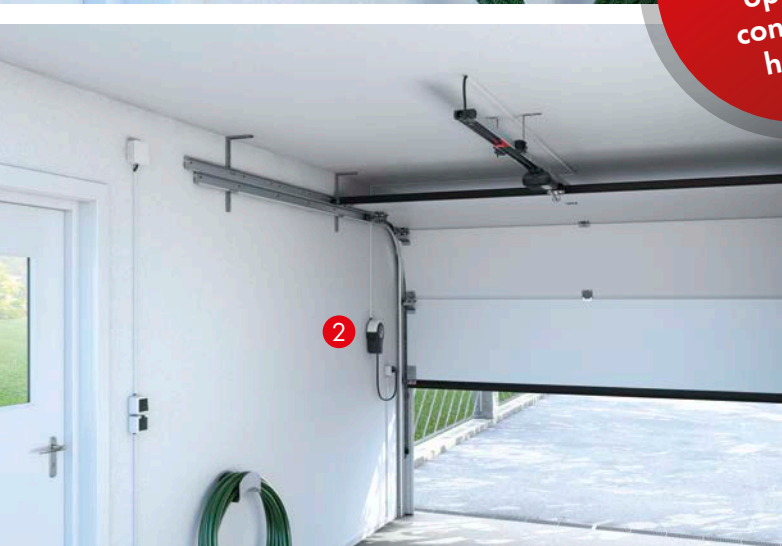
Technical data can be found on pages 24 + 25

¹⁾Special fitting required

²⁾Detailed warranty terms and conditions can be found at www.sommer.eu



Intelligent operator with separately operable control unit housing



The control unit can be mounted at the rear ①, at the front ② or on the ceiling ③.

SOMMER pro⁺

Flexible operator for sectional doors, overhead doors, one piece doors, hinged double doors¹⁾, up-and-over doors¹⁾ and side-opening sectional doors



13

The SOMMER pro⁺ combines our most advanced garage door control unit with the flexibility of a separate control unit housing. There are three alternatives for separate installation of the housing (front, rear or on the ceiling) so that existing sockets can be used. The integrated button in the control unit housing offers additional convenience in the garage.

Top quality

- The low-wear, robust and standard-compliant technology with its powerful, travelling motor ensures reliable operation and functionality for many years, with extremely low energy consumption.
- This gentle transmission technology ensures a long service life and less wear and tear of the garage door operator. The operator is completely maintenance-free.
- Intelligent, responsive control technology increases the service life of your door.
- **Unique obstacle detection:** Damage is avoided, e.g. due to freezing conditions.
- **Secure door closing:** Uneven ground conditions are compensated for thanks to the optimum closing pressure. Pests and leaves are kept outside.

Maximum safety

- **Optimised for break-in protection:** The operator detects attempted break-ins and generates active counter-pressure through motor with high self-locking.
- **Partial opening:** To move the door to a ventilation position via a radio command, or automatically as an option via the Senso humidity sensor.
- Power-saving LED lighting in travelling motor carriage for better lighting of the garage and any potential hazard areas.
- Integrated emergency release for manual interior operation of the door in the event of a power failure.

Technical data can be found on pages 24 + 25

¹⁾Special fitting required

²⁾Detailed warranty terms and conditions can be found at www.sommer.eu

ADDITIONAL EQUIPMENT FOR CONVENIENCE, FUNCTION AND SAFETY



Lock – Locking magnet

1651V000

Magnet motor lock which mechanically blocks the motor in any position (including with ventilation function) up to an attack force of 300 kg, thereby improving the existing break-in protection.



Senso – Humidity sensor

10371

For recording temperature and air humidity in the garage. The motor carriage automatically opens the door a bit if necessary (e.g. when the air humidity is too high), ensuring perfect air circulation. When the optimum value is reached, the door is closed, reducing the long-term risk of mould formation.



Memo – Memory expansion

10373

Used to expand the memory to 450 handheld transmitter commands. During service, saved data can be easily adopted for a new motor carriage.

14



Buzzer – Alarm/warning buzzer

7043V000

Two functions in one product: The alarm buzzer recognises an attempted break-in and outputs a loud signal tone. The warning buzzer, on the other hand, outputs an acoustic signal during the closing process or when the wicket door is open.



Lumi+ – Additional LED lighting

7041V000

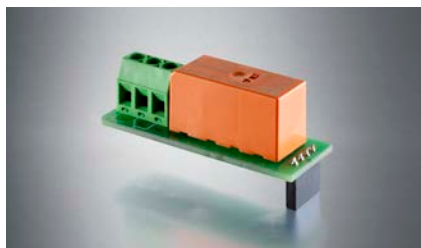
Additional LED lighting for the ceiling control unit. It is switched in parallel with the lighting in the motor carriage and can be easily switched on and off using the light function via a handheld transmitter.



Lumi pro+ – Additional LED lighting

S10205-00001

Additional LED lighting for the wall control. It is switched in parallel with the lighting in the motor carriage and can be easily switched on and off using the light function via a handheld transmitter.



Relay – Additional relay

#7042V000

Additional relay for the additional connection of a garage or courtyard light or another 230 V consumer (max. switching capacity 5 A, AC 250 V or DC 24 V). A door status display can also be integrated as an option.



Laser – Parking position laser

10378

Gives optical assistance for perfect positioning of the vehicle in the garage. The laser is active during the opening process and the set lighting time.



Motion – Motion detector

S10343-00001

A passive infrared sensor detects invisible thermal radiation from moving bodies (people/animals, etc.) and issues a response. When you enter the garage, the lighting on the operator is automatically switched on (supplemental lighting/relay) so that you can move around safely.

15



Accu – Emergency power supply

#S10523-00001

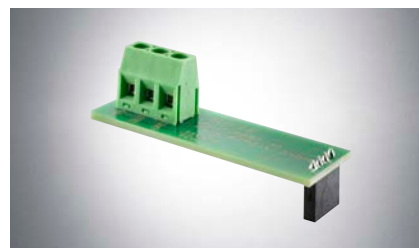
Supplies energy to the operator for > 5 door cycles in the event of a power failure.



Conex – Circuit board

S10807-00001

Permits the connection of two corded pulse generators for control of the door and one external lighting unit. Operating modes "Defined opening" and "Defined closing" can be optionally set via a DIP switch.



Output OC – PCB

S10854-00001

Transfers the door status (open/closed) to Smart Home systems. Further external lighting can be integrated as an option (max. 200 mA; DC 24 V).

MODERN, BIDIRECTIONAL RADIO SYSTEM

For maximum convenience, we offer the corresponding radio products for all modules. With the low-interference and secure transmission radio system, you will no longer have to get out of the car to open the garage door when it's raining, snowing or dark outside.

In addition to convenience, the bidirectional SOMloq2 radio control system provides the most advanced security. The tried-and-tested Somloq Rollingcode 868.8 MHz system remains available for you from our product range.

The bi-directional radio control system offers numerous additional functions which make everyday life easier – from feedback on whether the radio signal is being received to status queries of the door to auto repeat and hop functions.

Control your systems conveniently with a radio transmitter and benefit from our SOMloq2 radio system when opening your yard and garage doors.

Key benefits to you of the SOMloq2:

Secure encryption

The future-proof SOMloq2 radio control system offers maximum data protection against hackers thanks to 128-bit AES encryption with rolling code.

Repeating radio signal

The auto-repeat function ensures convenient opening while approaching the building. The output radio signal repeats in a certain cycle to permit optimal availability.

High radio range

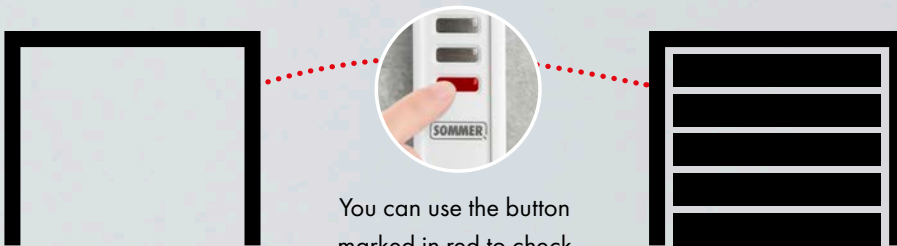
With innovative hop function, the range is extended as radio signals are forwarded from SOMloq2 receivers.

Also for existing SOMMER operators

SOMloq2 transmitters are backward compatible with the Somloq Rollingcode radio system, making it possible to control existing operators and radio receivers.

Is the door closed?

Query the current **status of your door** directly from the couch or your deckchair in the garden.



You can use the button marked in red to check whether your door is open or closed.





SOMloq2



18

HANDHELD TRANSMITTERS – LET'S MAKE THINGS EVEN EASIER

Handheld transmitters from SOMMER offer you a variety of options for making your everyday life easier. Open the garage door conveniently via radio control system, switch the light on and off or open the door.



Pearl – 4-command transmitter

4018V000 – black/red
4018V001 – black/pink
4018V003 – white/pink
4018V020 – white/stainless steel



Pearl Vibe – 4-command transmitter with vibration feedback

4019V000 – black/red
4019V001 – black/pink
4019V003 – white/pink
4019V021 – white/stainless steel



Pearl Status – 3-command transmitter with the option to query top position/reception status

S10448-00001 – white/stainless steel
S10448-00012 – black/stainless steel



Slider+ – 4-command transmitter

S10305-00001 – black/stainless steel



Slider Vibe – 4-command transmitter with vibration feedback

S10202-00001 – black/stainless steel



Pearl Twin – 2-command transmitter

S10019-00001 – black/chrome



Telecody+ – 12-command transmitter with illuminated keys

S10212-00001 – black/stainless steel



Pearl range mount – for fixing in the car or on the wall

4643V000 – black
4643V001 – white

IT'S ALL IN YOUR HANDS ...

... AND YOU WILL BE AMAZED AT WHAT CAN BE OPERATED BY RADIO TECHNOLOGY AND AT THE LEVEL OF CONVENIENCE YOU WILL BENEFIT FROM

Our radio solutions allow you to have an individual level of freedom over your own smart home systems; in the garden or in the garage.

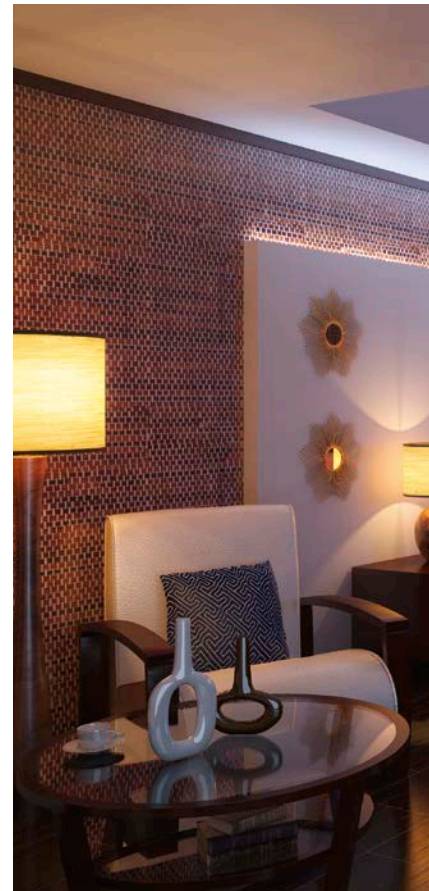
At SOMMER, security and convenience go hand in hand. Only when you have that peace of mind can you fully reap the benefits of our limitless radio solutions.

EASY CONVERSION AND RETRO-FITTING WITH RADIO RECEIVERS

20

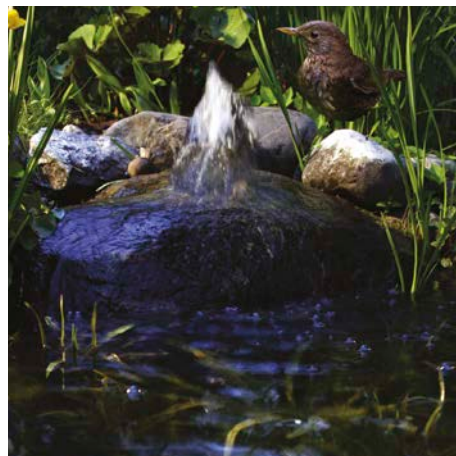
SOMplug radio receiver in power socket housing (1-channel)

This radio receiver allows simple conversion of external operators and easy changing of the radio frequency. Optional feedback via handheld transmitter when the sent command has been processed by the receiver is also possible.



SOMsocket radio power socket

The radio power socket can be used to switch the plugged-in application (e.g. light) on and off via radio signal. A handheld transmitter (e.g. Pearl Status) can be used for a status query, e.g. whether the connected consumer is switched on or off.





Access systems

With the biometric recognition feature of SOMMER fingerprint systems, you can open garage doors and yard gates with one tiny finger motion.



For universal applications
or in house doors



S11191-00001
ENTRAsys+



SOMtouch radio wall button

Smart home applications also be realised conveniently with the radio switches for indoors. The door position can be queried using the small button.



S10447-00001 (white/white)
S10447-00002 (anthracite/white)

THE RIGHT SOMMER ACCESSORIES FOR THE PERFECT DOOR SYSTEM



Sectional door



Side-opening sectional doors



One piece door

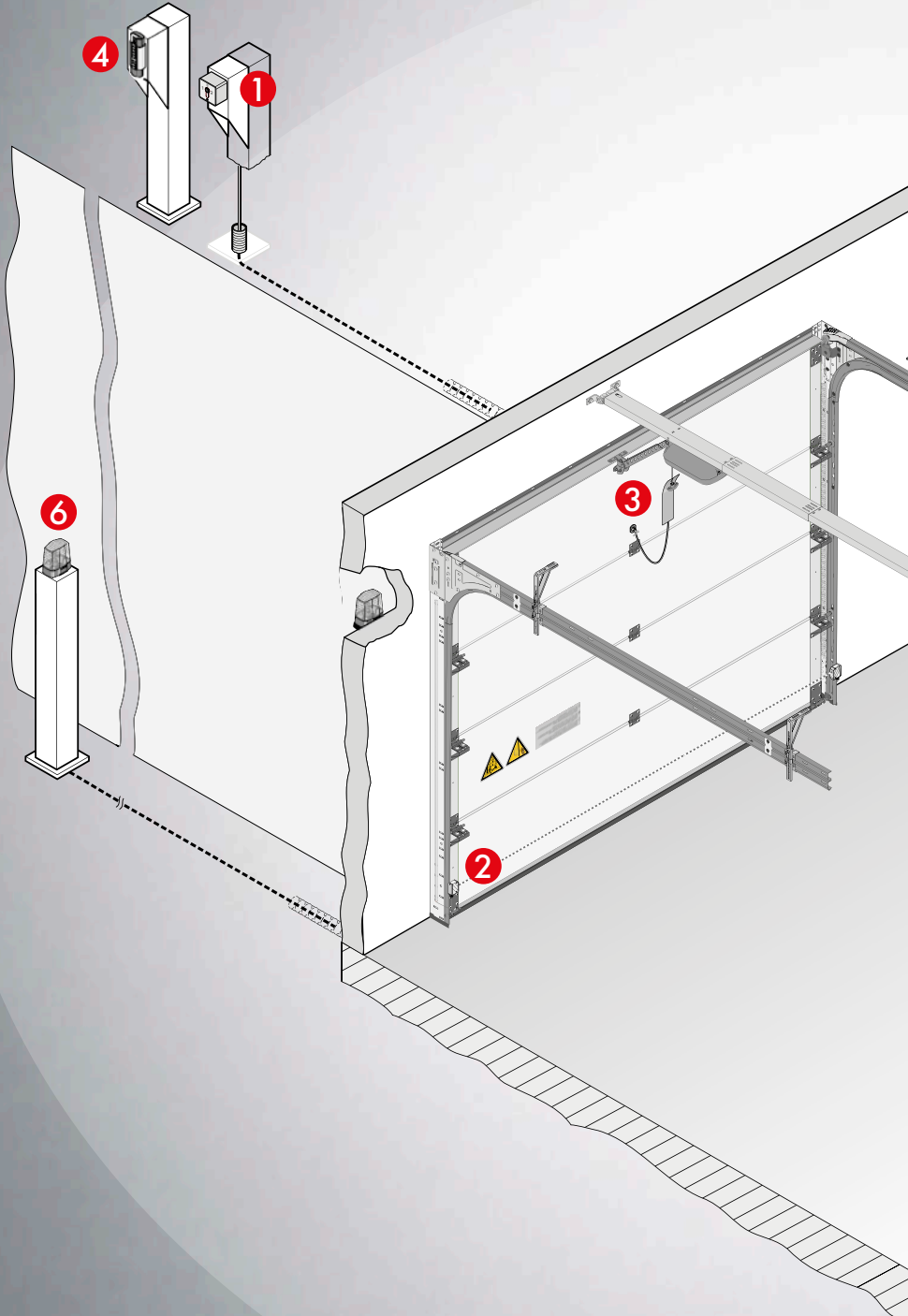


Up-and-over door



Hinged double door

22





EXTRA ADD-ONS FOR YOUR APPLICATIONS

1 Key switch

Allows the door system to be operated only by authorised persons with a key.

2 Photocells

Detect obstacles when the light beam is interrupted and prevent the door closing; they can be installed in a variety of scenarios and are even suitable for outdoor installation.

3 Emergency release lock

For fast and safe emergency release, e.g. in the event of a power failure if there is no separate access to the garage. Suitable for all sectional doors, side-opening sectional doors, side-opening doors and hinged double doors.

4 Telecody+ coder switchgear

Large buttons permit easy operation and opening and closing of the door (even when wearing gloves).

5 Handheld transmitter

For convenient opening of the garage door or building doors, and for switching a light on and off.

6 Warning light

For additional optical hazard detection.

Bowden wire

For emergency door release.

Wicket door switch

With the wicket door open, the safety circuit is interrupted, the operator will not stop or start when the wicket door is open.

TECHNICAL DATA AT A GLANCE

Technical data and connection options on the SOMMER base⁺/pro⁺ motor carriages

Operator unit	S 9060 base ⁺ /pro ⁺	S 9080 base ⁺ /pro ⁺	S 9110 base ⁺ /pro ⁺
Item number	8700V000/S10154-00001	8800V000/S10155-00001	8500V000/S10156-00001
Max. pull and pushing force	600N	800 N	1.100 N
Max. door width/door height ¹⁾ with:			
Sectional door	4500 mm/2500 mm	6000 mm/2500 mm	8000 mm/ 2500 mm
One piece door	4500 mm/2750 mm	6000 mm/2750 mm	8000 mm/2750 mm
Up-and-over door	4500 mm/2050 mm	6000 mm / 2050 mm	8000 mm/2050 mm
Hinged double door ²⁾	2800 mm/2500 mm	2800 mm/2750 mm	2800 mm/3000 mm
Side-opening sectional door/ side-opening door ³⁾	2500 mm (4500 mm)/ 2500 mm	2500 mm (5750 mm)/ 2750 mm	2500 mm (6850 mm)/ 3000 mm
Travel length (standard)	2750 mm	2750 mm	2750 mm
Max. travel length extended	4900 mm 2 × extensions (1096 mm)	6000 mm 3 × extensions (1096 mm)	7100 mm 4 × extensions (1096 mm)
Max. door weight	120 kg	160 kg	200 kg
Max. running speed ⁴⁾	240 mm/s	210 mm/s	180 mm/s
Power consumption (power-saving mode)	< 1 W	< 1 W	< 1 W
Duty cycle after S3 in %	40	40	40
Number of radio memory positions	40	40	40
Max. recommended no. of spaces	30	30	30
Motor carriage			
Operator lighting LED	✓ (6 LEDs)		
Lock slot	✓		
Memo slot	✓ (Expands the memory to 450 handheld transmitter commands)		
Senso slot	✓		
Buzzer slot	✓		
Laser slot	✓		
Motion slot	✓		
OSE/8k2 connection	✓		
Wicket door contact connection	✓		
Output 12 V, 100 mA	✓		
USART slot for Homelink or Delta Dore Module	✓		
DIP switches 1...4	✓		

1) Guideline value; these values may vary depending on the door construction. 2) Only possible with SOMMER pro/pro⁺! Separate hinged double door fitting required.
3) Side-opening sectional doors and side-opening doors wider than 2,500 mm can be implemented with the corresponding number of extensions. 4) Measured without door.

Connection options onto the ceiling or wall control unit

Type	SOMMER base ⁺	SOMMER pro ⁺
Ceiling control unit	✓	-
Wall control unit	-	✓
Accu slot	✓	✓
Keypad slot for fail keypad pro ⁺ /Conex	✓	✓
Relay slot / Output OC	✓	✓
Light slot for additional LED lighting Lumi ⁺ /Lumi pro ⁺	✓	✓
Pulse button connection	✓	✓
Button 2 connection (partial opening)	✓	✓
Warning light connection	✓ (24 V / max. 25 W)	✓ (24 V / max. 25 W)
2-/4-wire photocell connection; door CLOSE; DC 24 V	✓	✓
Output DC 24 V, 100 mA	✓	✓
DIP switches 1...4	✓	✓

SECURITY ASSURED WITH THE PERFECT SOLUTION



26

GARAGE DOOR OPERATORS

UNDERGROUND GARAGE OPERATORS

YARD AND OUTDOOR GATE OPERATORS

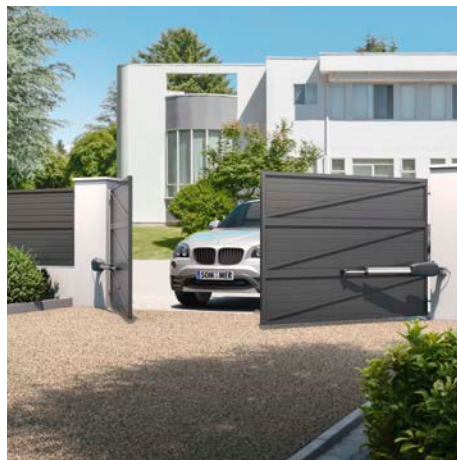
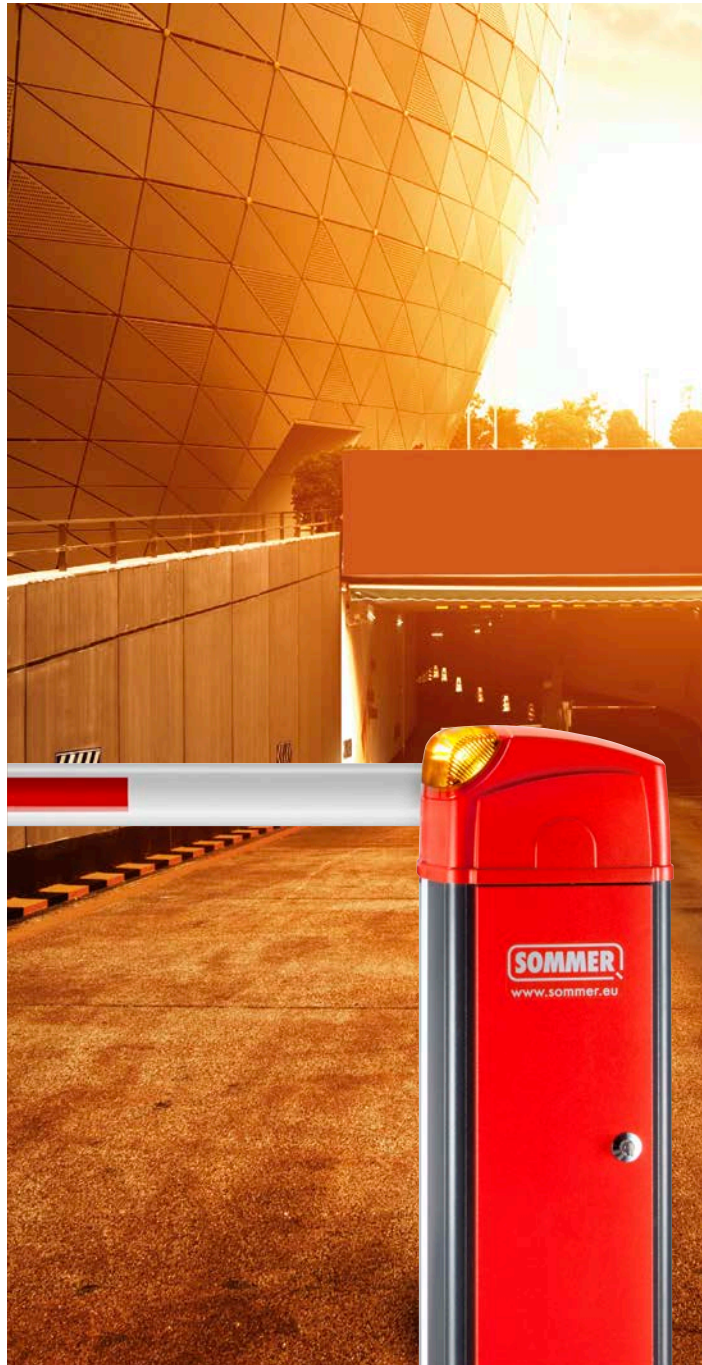
RADIO SOLUTIONS

SMART HOME

ACCESS SYSTEMS

ROLLER SHUTTER OPERATORS





AWNING OPERATORS

ROLLER DOOR CONTROL UNITS

INDUSTRIAL DOOR OPERATORS

BARRIER CONTROL SYSTEMS

ACCESSORIES



DE-EN #S11445-00002 - 02/18 Errors and omissions excepted, subject to technical changes.



SOMMER ANTRIEBS- UND FUNKTECHNIK GMBH
HANS-BÖCKLER-STR. 21-27 | D-73230 KIRCHHEIM/TECK, GERMANY
PHONE +49 (0)70 21 / 80 01-0 | FAX +49 (0)70 21 / 80 01-100
INFO@SOMMER.EU | WWW.SOMMER.EU

  SOMMERGMBH